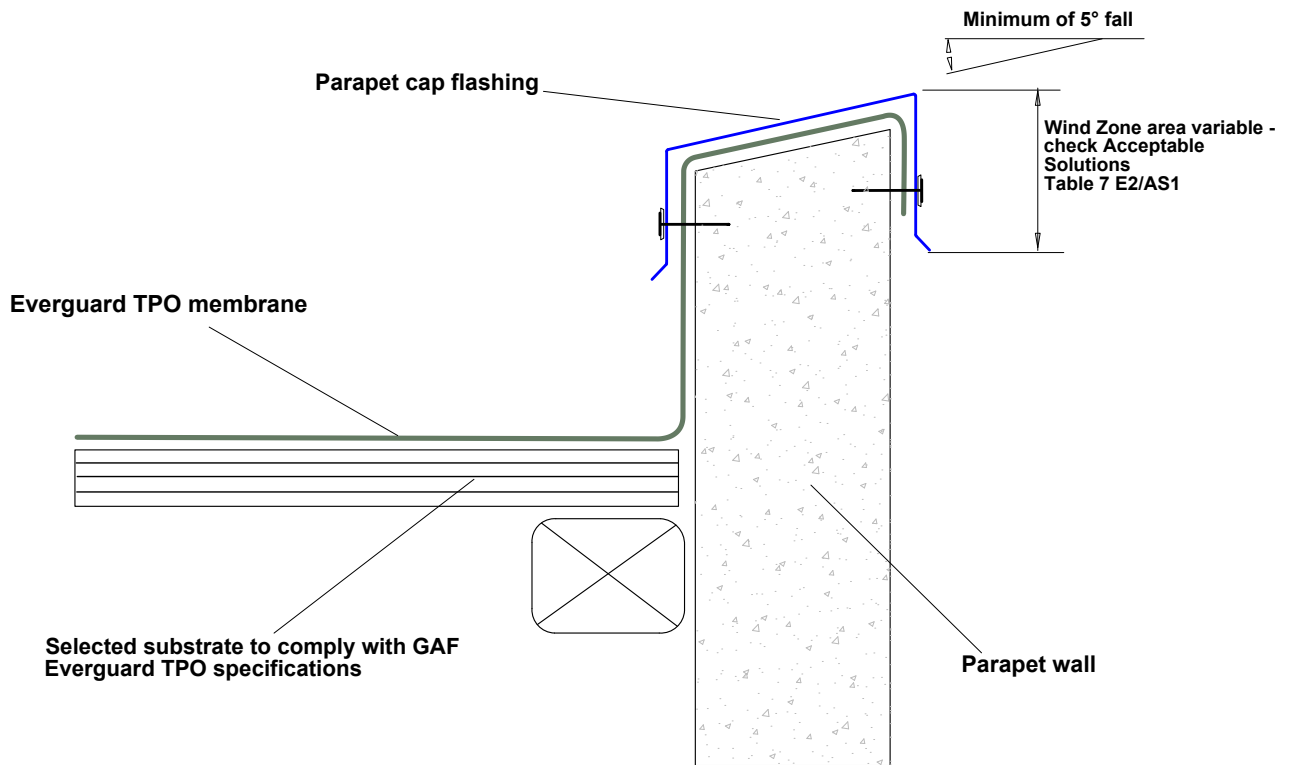


CONSTRUCTION DETAILS FOR 'GAF TPO SINGLE-PLY ROOFING SYSTEM'

TPO to be laid with adhesive to substrate and parapet prior to installation of parapet cap.



	DRAWING: <b>PARAPET FLASHING</b>	DATE: <b>10 JUNE 2014</b>	DETAIL: <b>101</b>	 BRANZ Appraised Appraisal No 529
	DETAILS FOR: <b>EVERGUARD TPO ROOFING</b>	SCALE: <b>N/A</b>		